

**Model** VORTEX 300

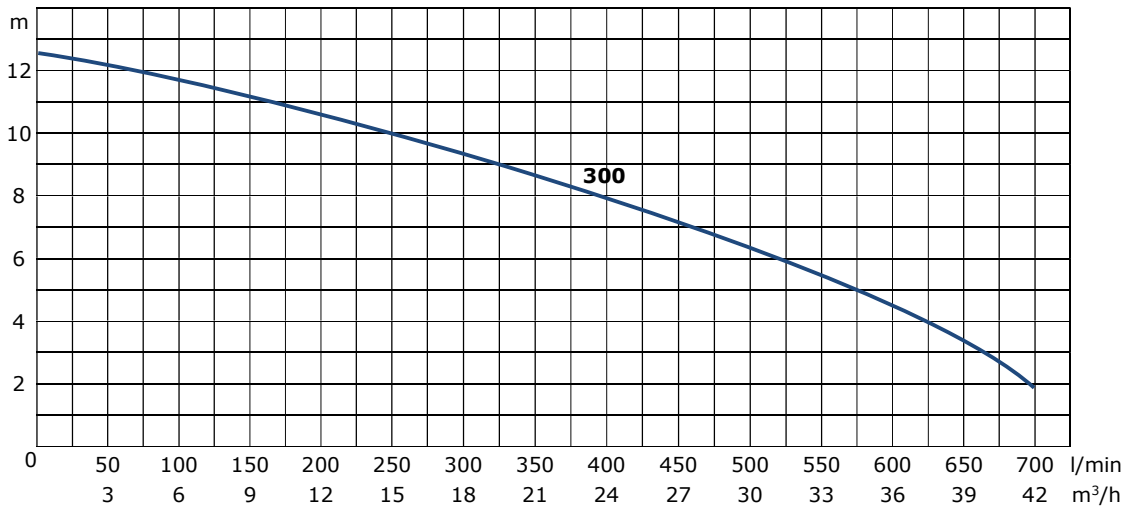
**Description** Top-quality heavy-duty construction pump suitable to pump sewage water. It can be installed in industrial plants, in sewage water treatment plants and for husbandry installations to pump manure.



**Pumped fluid**  
*Application* Sewage water  
*Max Density* 1100 kg/m<sup>3</sup>  
*Temperature range* 0-40 °C 32-104 °F  
*pH range* 6-10 pH

**Performance**

Model		Head (m)										
		2	3	4	5	6	7	8	9	10	11	12
		Capacity										
VORTEX 300	l/min	700	665	620	575	520	460	390	325	250	163	70
	m <sup>3</sup> /h	42,0	39,9	37,2	34,5	31,2	27,6	23,4	19,5	15,0	9,8	4,2
	l/s	11,67	11,08	10,33	9,58	8,67	7,67	6,50	5,42	4,17	2,72	1,17



### Hydraulic

<i>Impeller type</i>	Back open impeller "vortex" type
<i>Outlet</i>	DN 80 – horizontal, PN 16, round flange
<i>Free passage</i>	55mm
<i>Max head</i>	12,5m (1.2 bar)
<i>Max capacity</i>	700 l/min
<i>Min suction level</i>	160mm

### Electric characteristics

Model	Power (P <sub>2</sub> )		rpm	Voltage	ph	I <sub>N</sub> A	Built-in float-switch	Capacitor μF
	HP	kW						
VORTEX 300 T	3.0	2.2	2850	400	3~	6,5	NO	-

### Technical characteristics

<i>IP</i>	68
<i>Sealing</i>	Double independent mechanical seal in oil bath
<i>Max. immersion</i>	5 meters
<i>Protective coating</i>	Two-component epoxy paint anti-corrosion
<i>Sound pressure level</i>	< 70dB

### Components & Materials

<i>Cable</i>	Neoprene H07RN8F, length 10 meters; 4G1,5 with free ends
<i>Impeller</i>	Cast-iron EN-GJL-200
<i>Pump support</i>	Cast-iron EN-GJL-200
<i>Discharge body</i>	Cast-iron EN-GJL-200
<i>Motor case</i>	Cast-iron EN-GJL-200
<i>Pump cover</i>	Cast-iron EN-GJL-200
<i>Motor shaft</i>	Stainless steel AISI 304 1.4301 (A2)
<i>Screws</i>	Stainless steel AISI 304 1.4301 (A2)
<i>Mechanical seal</i>	Lower: Silicon carbide / NBR / AISI 304 Upper: Alumina / Graphite / AISI 304
<i>Kit o-ring</i>	NBR
<i>Ball bearings</i>	Lower: 6204-ZZ SKF, upper: 6204-ZZ SKF
<i>Oil</i>	Dielectric, not polluting, not toxic

### Motor characteristics

<i>Type of motor</i>	Hard-duty squirrel cage motor in oil bath
<i>Start type</i>	DOL (Direct On Line)
<i>Protection</i>	By the user (see optional section for electric boards)
<i>Insulation class</i>	Class F
<i>Nos. of poles</i>	2
<i>Service type</i>	S1 (with pump completely immersed into pumped fluid)
<i>Cooling</i>	Ensured by the immersion of the pump into the fluid

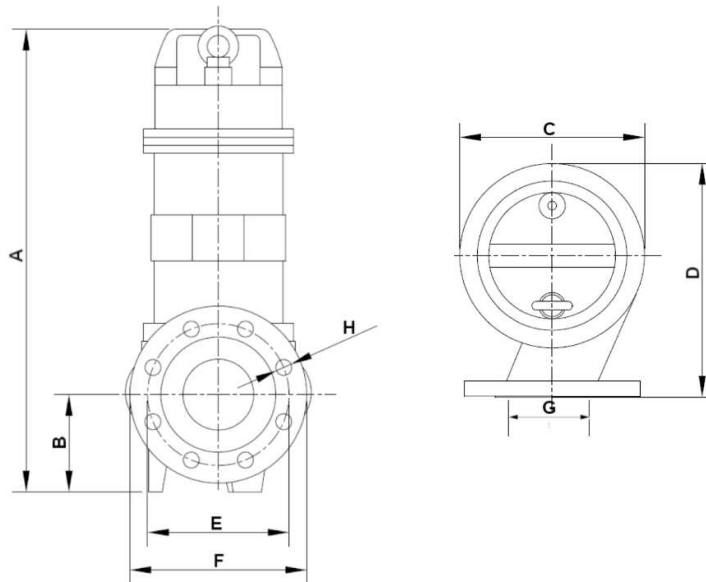
**Optional available**

<i>Coupling foot</i>	Coupling foot model DN80-VRT.300 (conession DN80)
<i>Hose connection</i>	90° elbow flanged DN80 x 80mm hose connection
<i>Electric board</i>	Model F6-0.5/10-3
<i>No return valve</i>	Professional flanged no-return ball check valve DN80 in cast-iron with NBR ball
<i>Separated float switch</i>	10 meters cable or 20 meters cable float-switch to be connected to an electric board F6-0.5/10-3
<i>Anodes</i>	To avoid corrosion by galvanic currents

**Special features on request**

<i>Metallized impeller</i>	Metallic coating of the impeller in molybdenum carbide for very abrasive applications
----------------------------	---

**Dimensions & weight**



Model	Dimensions (mm)								Weight kg	Pumps per layer on EPAL	
	A	B	C	D	E	F	G	H			Carton box
VORTEX 300	520	110	210	266	160	200	DN80	18	295x255xH550	34	12