

Models VORTEX 150
VORTEX 200

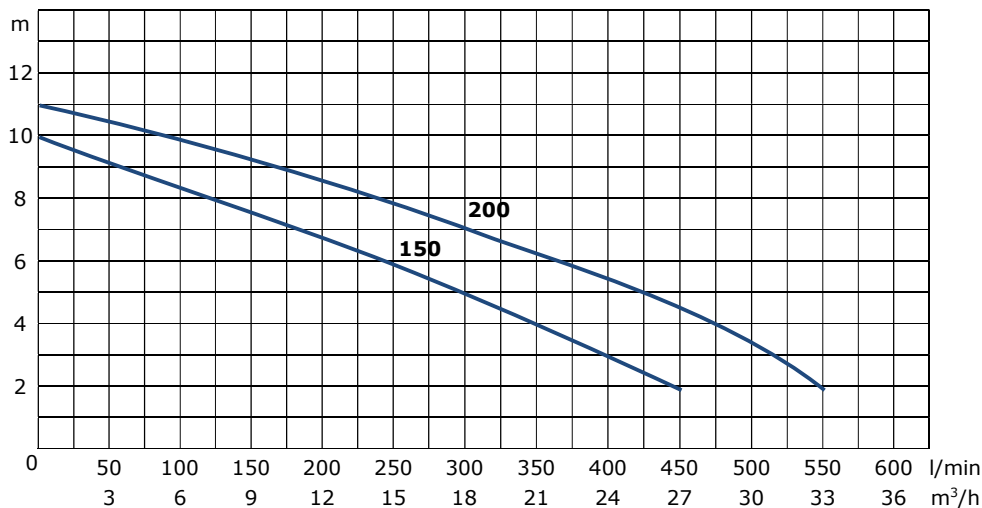
Description Top-quality heavy-duty construction pump suitable to pump sewage water. It can be installed in domestic applications to drain rain water, in industrial plants, in sewage water treatment plants and for husbandry installations to pump manure.



Pumped fluid
Application Sewage water
Max Density 1100 kg/m³
Temperature range 0-40 °C 32-104 °F
pH range 6-10 pH

Performance

Models		Head (m)									
		2	3	4	5	6	7	8	9	10	
VORTEX 150	Capacity										
	l/min	450	398	350	292	245	175	110	50		
	m ³ /h	27,0	23,9	21,0	17,5	14,7	10,5	6,6	3,0		
	l/s	7,50	6,63	5,83	4,87	4,08	2,92	1,83	0,83		
VORTEX 200	Capacity										
	l/min	550	520	480	425	370	315	245	175	100	
	m ³ /h	33,0	31,2	28,8	25,5	22,2	18,9	14,7	10,5	6,0	
	l/s	9,17	8,67	8,00	7,08	6,17	5,25	4,08	2,92	1,67	



Hydraulic

<i>Impeller type</i>	Back open impeller "vortex" type
<i>Outlet</i>	2" – horizontal, threaded BSP female
<i>Free passage</i>	50mm
<i>Max head</i>	VORTEX 150: 10m (1.0 bar) VORTEX 200: 11m (1.1 bar)
<i>Min head</i>	2m
<i>Max capacity</i>	VORTEX 150: 450 l/min VORTEX 200: 550 l/min
<i>Min suction level</i>	155mm

Electric characteristics

Models	Power (P ₂)		rpm	Voltage V	ph	I _N A	Built-in float-switch	Capacitor μF
	HP	kW						
VORTEX 150 M	1.5	1.1	2850	230	1~	9,5	NO	30
VORTEX 150 MG							YES	
VORTEX 150 T				400	3~	3,5	NO	
VORTEX 200 M	2.0	1.5	2850	230	1~	10,8	NO	40
VORTEX 200 MG							YES	
VORTEX 200 T				400	3~	5,0	NO	

Technical characteristics

<i>IP</i>	68
<i>Sealing</i>	Double independent mechanical seal in oil bath
<i>Max. immersion</i>	5 meters
<i>Protective coating</i>	Two-component epoxy paint anti-corrosion
<i>Sound pressure level</i>	< 70dB

Components & Materials

<i>Cable</i>	Neoprene H07RN8F, length 10 meters; 3G1,5 with molded shuko plug for single-phase; 4G1,5 with free ends for three-phase
<i>Impeller</i>	Cast-iron EN-GJL-200
<i>Pump support</i>	Cast-iron EN-GJL-200
<i>Discharge body</i>	Cast-iron EN-GJL-200
<i>Motor case</i>	Cast-iron EN-GJL-200
<i>Pump cover</i>	Cast-iron EN-GJL-200
<i>Motor shaft</i>	Stainless steel AISI 304 1.4301 (A2)
<i>Screws</i>	Stainless steel AISI 304 1.4301 (A2)
<i>Mechanical seal</i>	Lower: Silicon carbide / NBR / AISI 304 Upper: Alumina / Graphite / AISI 304
<i>Kit o-ring</i>	NBR
<i>Ball bearings</i>	Lower: 6204-ZZ SKF, upper: 6204-ZZ SKF
<i>Oil</i>	Dielectric, not polluting, not toxic

Motor characteristics

Type of motor	Hard-duty squirrel cage motor in oil bath
Start type	DOL (Direct On Line)
Protection	Automatic reset built-in thermal protection (for single-phase voltage); by a magnetothermic switch by the user for three-phase voltage (see optional section for electric boards)
Insulation class	Class F
Nos. of poles	2
Service type	S1 (with pump completely immersed into pumped fluid)
Cooling	Ensured by the immersion of the pump into the fluid

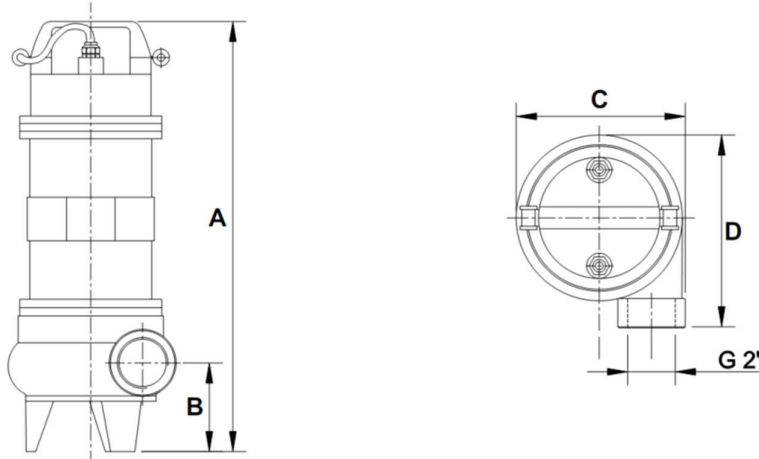
Optional available

Coupling foot	Coupling foot model 2" (connection 2")
Hose connection	90° elbow hose connection in brass, 3 pieces, 2" x 50mm
Electric board	Model F5-0.5/3-1 for single-phase, model F6-0.5/10-3 for three-phase
No return valve	Professional no-return ball check valve 2" in cast-iron with NBR ball
Separated float switch	10 meters cable or 20 meters cable float-switch to be connected to an electric board F5-0.5/3-1 or F6-0.5/10-3
Anodes	To avoid corrosion by galvanic currents

Special features on request

Metallized impeller	Metallic coating of the impeller in molybdenum carbide for very abrasive applications
---------------------	---

Dimensions & weight



Models	Dimensions (mm)					Carton box	Weight kg	Pumps per layer on EPAL
	A	B	C	D	G			
VORTEX 150	514	106	200	228	2"	295x255xH550	31,0	12
VORTEX 200							32,0	