

**Models** SAND 150  
SAND 200

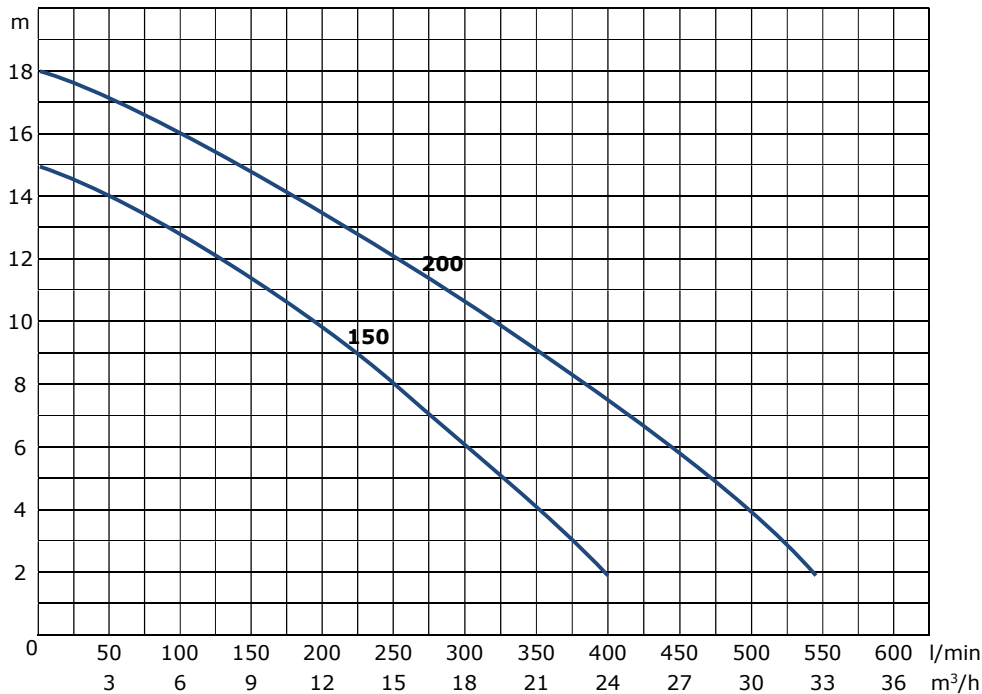
**Description** Top-quality heavy-duty construction pump suitable to pump sandy and muddy water. It can be installed in construction sites and in general in dewatering applications.

**Pumped fluid**  
*Application* Sandy or muddy water  
*Max Density* 1100 kg/m<sup>3</sup>  
*Temperature range* 0-40 °C 32-104 °F  
*pH range* 6-10 pH



**Performance**

| Models   |                   | Head (m)        |      |      |      |      |      |      |      |
|----------|-------------------|-----------------|------|------|------|------|------|------|------|
|          |                   | 2               | 4    | 6    | 8    | 10   | 12   | 14   | 16   |
|          |                   | <b>Capacity</b> |      |      |      |      |      |      |      |
| SAND 150 | l/min             | 400             | 350  | 300  | 250  | 200  | 125  | 50   |      |
|          | m <sup>3</sup> /h | 24,0            | 21,0 | 18,0 | 15,0 | 12,0 | 7,5  | 3,0  |      |
|          | l/s               | 6,67            | 5,83 | 5,00 | 4,17 | 3,33 | 2,08 | 0,83 |      |
| SAND 200 | l/min             | 545             | 500  | 445  | 390  | 325  | 255  | 180  | 100  |
|          | m <sup>3</sup> /h | 32,7            | 30,0 | 26,7 | 23,4 | 19,5 | 15,3 | 10,8 | 6,0  |
|          | l/s               | 9,08            | 8,33 | 7,42 | 6,5  | 5,42 | 4,25 | 3,00 | 1,67 |



**Hydraulic**

|                          |  |
|--------------------------|--|
| <i>Impeller type</i>     | Dual-channel open impeller type                    |
| <i>Outlet</i>            | 2" – horizontal, threaded BSP female               |
| <i>Free passage</i>      | 10mm   |
| <i>Max head</i>          | SAND 150: 15m (1.5 bar)<br>SAND 200: 18m (1.8 bar) |
| <i>Max capacity</i>      | SAND 150: 400 l/min<br>SAND 200: 550 l/min         |
| <i>Min suction level</i> | 110mm  |

**Electric characteristics**

| <b>Models</b> | <b>Power (P<sub>2</sub>)</b> |     | <b>rpm</b> | <b>Voltage</b> | <b>ph</b> | <b>I<sub>N</sub></b> | <b>Built-in float-switch</b> | <b>Capacitor</b> |
|---------------|------------------------------|-----|------------|----------------|-----------|----------------------|------------------------------|------------------|
|               | HP                           | kW  |            |                |           |                      |                              |                  |
| SAND 150 M    | 1.5                          | 1.1 | 2850       | 230            | 1~        | 8,5                  | NO                           | 30               |
| SAND 150 MG   |                              |     |            |                |           |                      | YES                          |                  |
| SAND 150 T    |                              |     |            | 400            | 3~        | 3,5                  | NO                           |                  |
| SAND 200 M    | 2.0                          | 1.5 | 2850       | 230            | 1~        | 10,9                 | NO                           | 40               |
| SAND 200 MG   |                              |     |            |                |           |                      | YES                          |                  |
| SAND 200 T    |                              |     |            | 400            | 3~        | 4,6                  | NO                           |                  |

**Technical characteristics**

|                             |  |
|-----------------------------|--|
| <i>IP</i>                   | 68   |
| <i>Sealing</i>              | Double independent mechanical seal in oil bath |
| <i>Max. immersion</i>       | 5 meters                                       |
| <i>Protective coating</i>   | Two-component epoxy paint anti-corrosion       |
| <i>Sound pressure level</i> | < 70dB   |

**Components & Materials**

|                        |   |
|------------------------|---|
| <i>Cable</i>           | Neoprene H07RN8F, length 10 meters; 3G1,5 with molded shuko plug for single-phase; 4G1,5 with free ends for three-phase |
| <i>Impeller</i>        | Cast-iron EN-GJL-200  |
| <i>Pump support</i>    | Cast-iron EN-GJL-200  |
| <i>Discharge body</i>  | Cast-iron EN-GJL-200  |
| <i>Motor case</i>      | Cast-iron EN-GJL-200  |
| <i>Pump cover</i>      | Cast-iron EN-GJL-200  |
| <i>Motor shaft</i>     | Stainless steel AISI 304 1.4301 (A2)  |
| <i>Screws</i>          | Stainless steel AISI 304 1.4301 (A2)  |
| <i>Mechanical seal</i> | Lower: Silicon carbide / NBR / AISI 304<br>Upper: Alumina / Graphite / AISI 304   |
| <i>Kit o-ring</i>      | NBR   |
| <i>Ball bearings</i>   | Lower: 6204-ZZ SKF, upper: 6204-ZZ SKF  |
| <i>Oil</i>             | Dielectric, not polluting, not toxic  |

---

**Motor characteristics**

|                  |   |
|------------------|---|
| Type of motor    | Hard-duty squirrel cage motor in oil bath   |
| Start type       | DOL (Direct On Line)  |
| Protection       | Automatic reset built-in thermal protection (for single-phase voltage); by a magnetothermic switch by the user for three-phase voltage (see optional section for electric boards) |
| Insulation class | Class F   |
| Nos. of poles    | 2   |
| Service type     | S1 (with pump completely immersed into pumped fluid)  |
| Cooling          | Ensured by the immersion of the pump into the fluid   |

---

**Optional available**

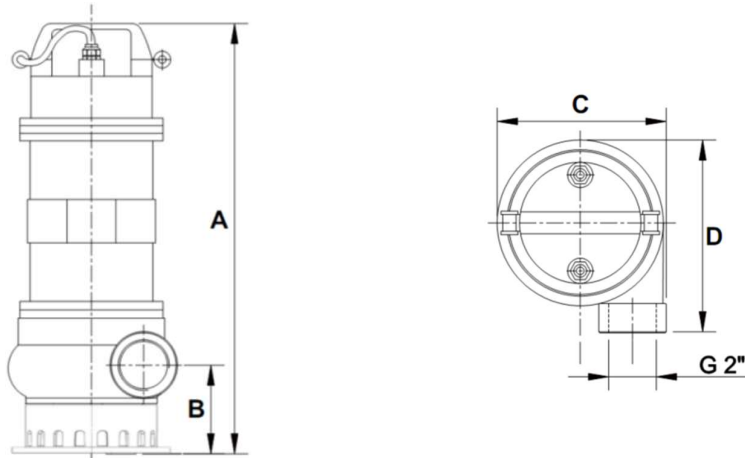
|                        |   |
|------------------------|---|
| Coupling foot          | Coupling foot model 2" (connection 2")  |
| Hose connection        | 90° elbow hose connection in brass, 3 pieces, 2" x DN50mm   |
| Flat PVC hose          | Three-layers flat roll-up hose made of PVC and high tensile synthetic textile. Suitable to pump abrasive fluids |
| Electric board         | Model F5-0.5/3-1 for single-phase, model F6-0.5/10-3 for three-phase  |
| No return valve        | Professional no-return ball check valve 2" in cast-iron with NBR ball   |
| Separated float switch | 10 meters cable or 20 meters cable float-switch to be connected to an electric board F5-0.5/3-1 or F6-0.5/10-3  |
| Anodes                 | To avoid corrosion by galvanic currents   |

---

**Special features on request**

|                     |   |
|---------------------|---|
| Metallized impeller | Metallic coating of the impeller in molybdenum carbide for very abrasive applications |
|---------------------|---|

**Dimensions & weight**



| Models   | Dimensions (mm) |     |     |     |    | Carton box   | Weight<br>kg | Pumps<br>per layer<br>on EPAL |
|----------|-----------------|-----|-----|-----|----|--------------|--------------|-------------------------------|
|          | A               | B   | C   | D   | G  |              |              |                               |
| SAND 150 | 521             | 113 | 200 | 228 | 2" | 295x255xH550 | 34,0         | 12                            |
| SAND 200 |                 |     |     |     |    |              | 35,0         |                               |